

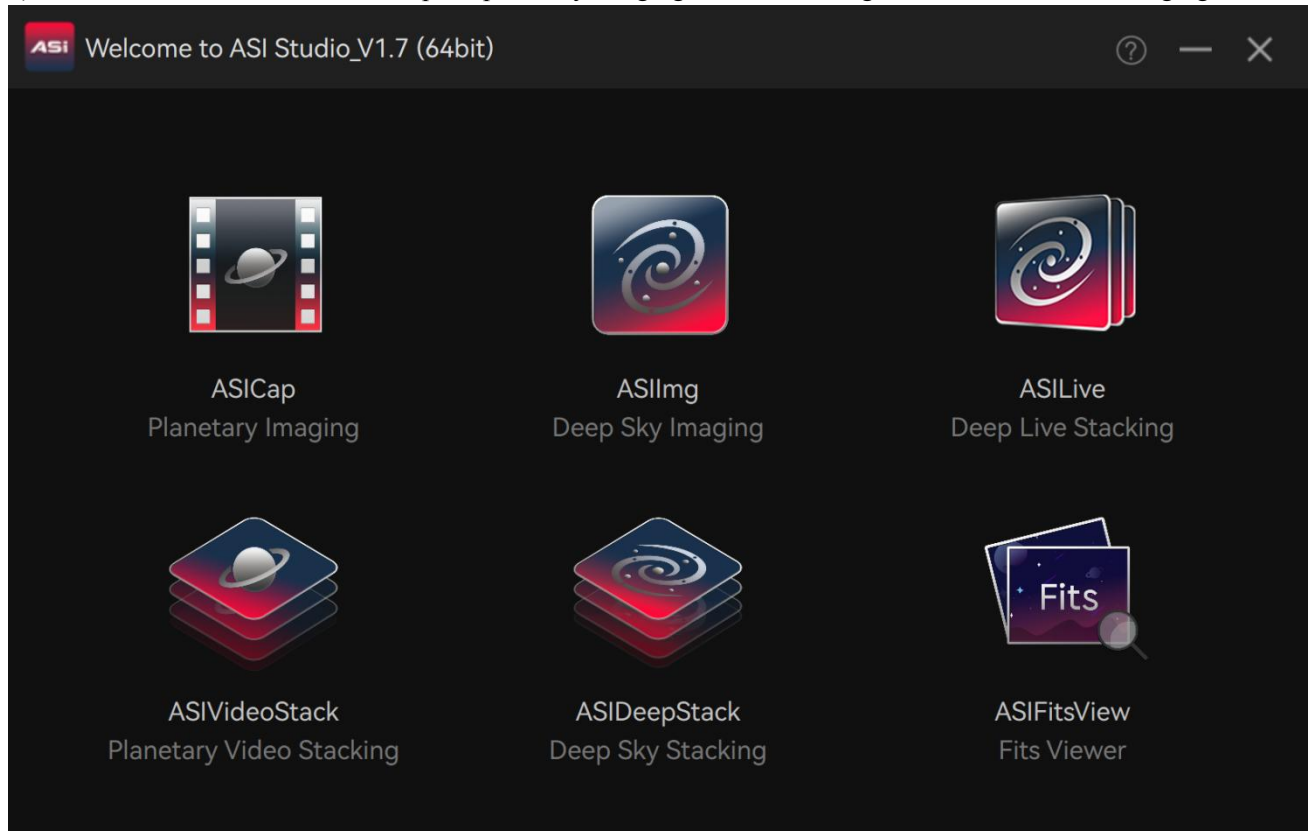
# ASI Mount Controller Manual


v1.1 2023.01.09

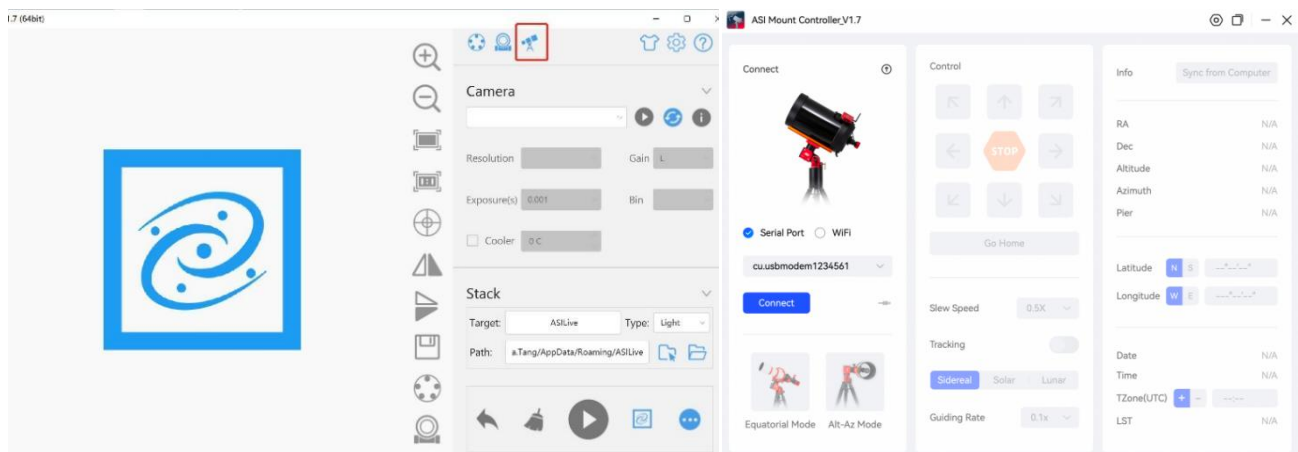
**Note: Only supports ZWO Equatorial/Alt-az mount**

## 1. Interface and Function Introduction

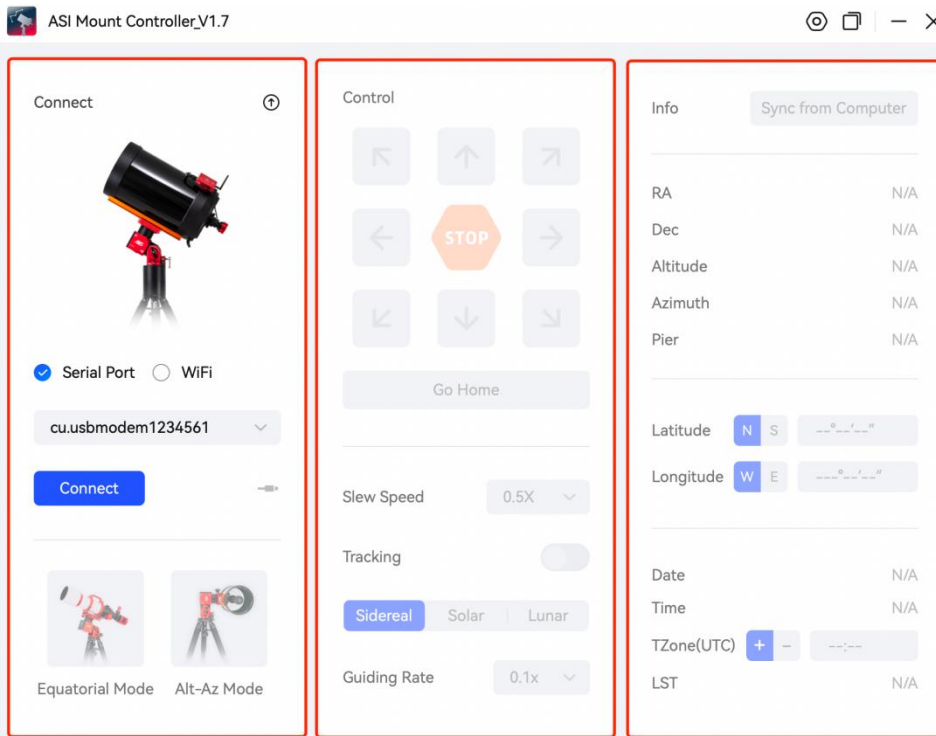
1) Launch ASISStudio, choose ASICap for planetary imaging, choose ASIImg or ASILive for DSO imaging.



2) Open ASICap, ASIImg or ASILive, then click the telescope icon  in the top right corner to enter the ASI Mount Controller.



There are 3 areas in the ASI Mount Controller interface: Connect Area, Control Area, and Info Area.



### Connect Area

There are two connection methods, Serial Port and WiFi. Select a connection method, then find the corresponding computer serial port name or mount WiFi name in the drop-down box, then click Connect. You can switch between Equatorial Mode and Alt-Az Mode after the mount is successfully connected.

### Control Area

Contains eight direction Slew buttons, Stop button, Go Home button, Slew Speed selection(0.5x~1440x), Tracking switch, Tracking Rate adjustment (Sidereal, Solar, Lunar) and Guiding Rate selection (0.1x~0.9x).

### Info Area

Displays the mount information, including:

**Coordinate:** RA (Right Ascension), DEC (Declination), Altitude, Azimuth, Pier.

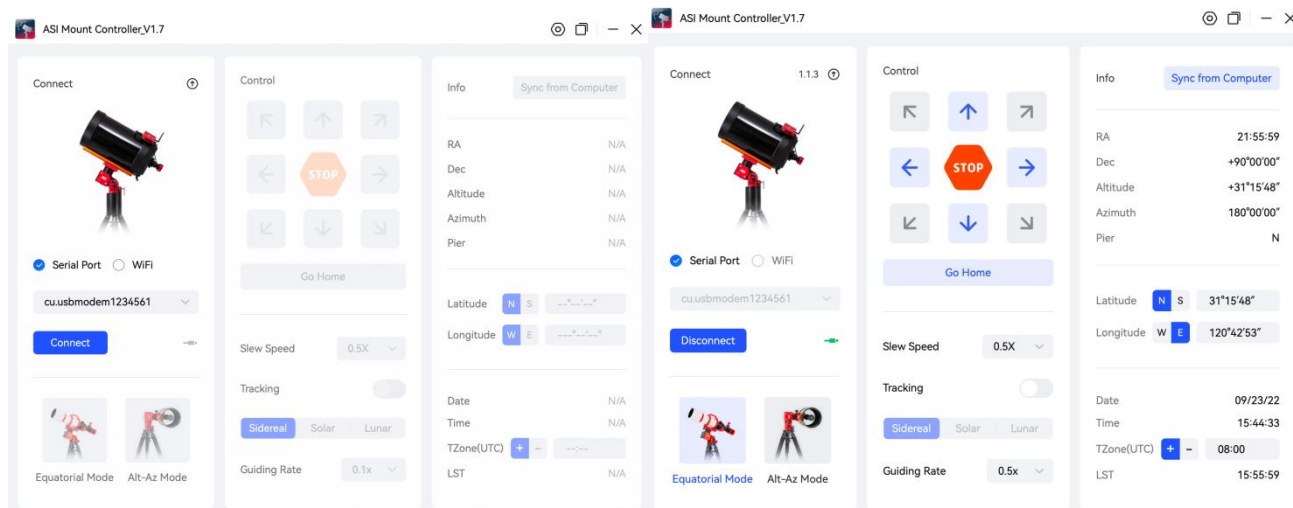
**Location:** Longitude, Latitude.

**Date & Time:** Date, Time, Time Zone, LST.

## 2. Mount Connection Methods

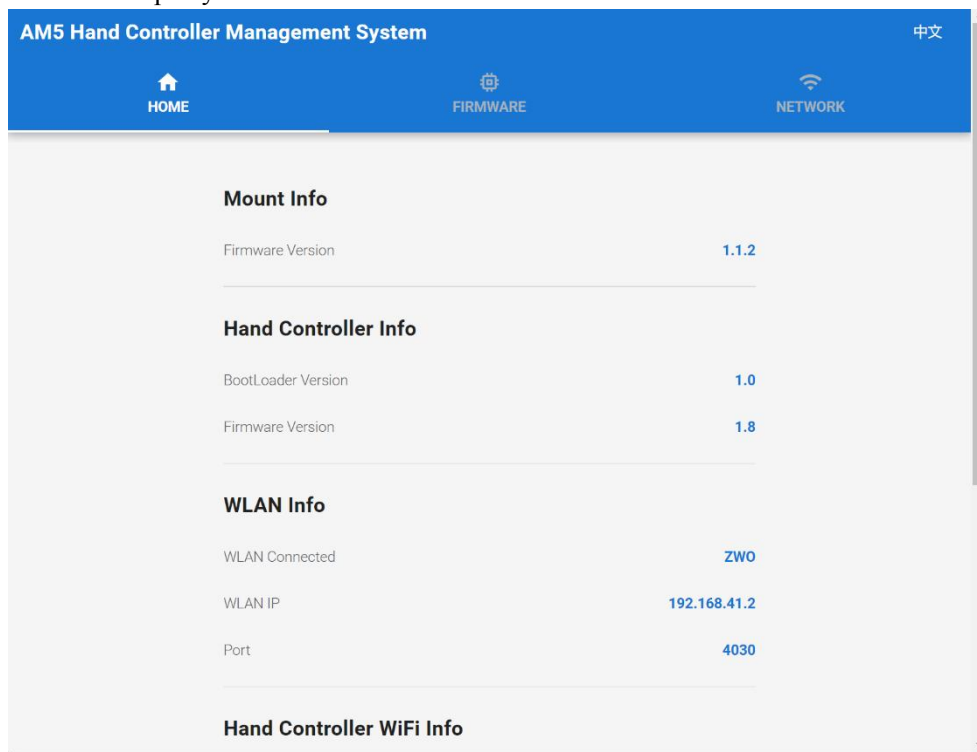
### 1) Via Serial Port:

Connect your mount to the computer with an USB 2.0 cable then choose the serial port in the drop-down box. The controller will automatically recognize computer serial port. Click the connection button. The Control Area will be accessible after the mount is connected. And the Info Area will also automatically get the information.



### 2) Via WiFi:

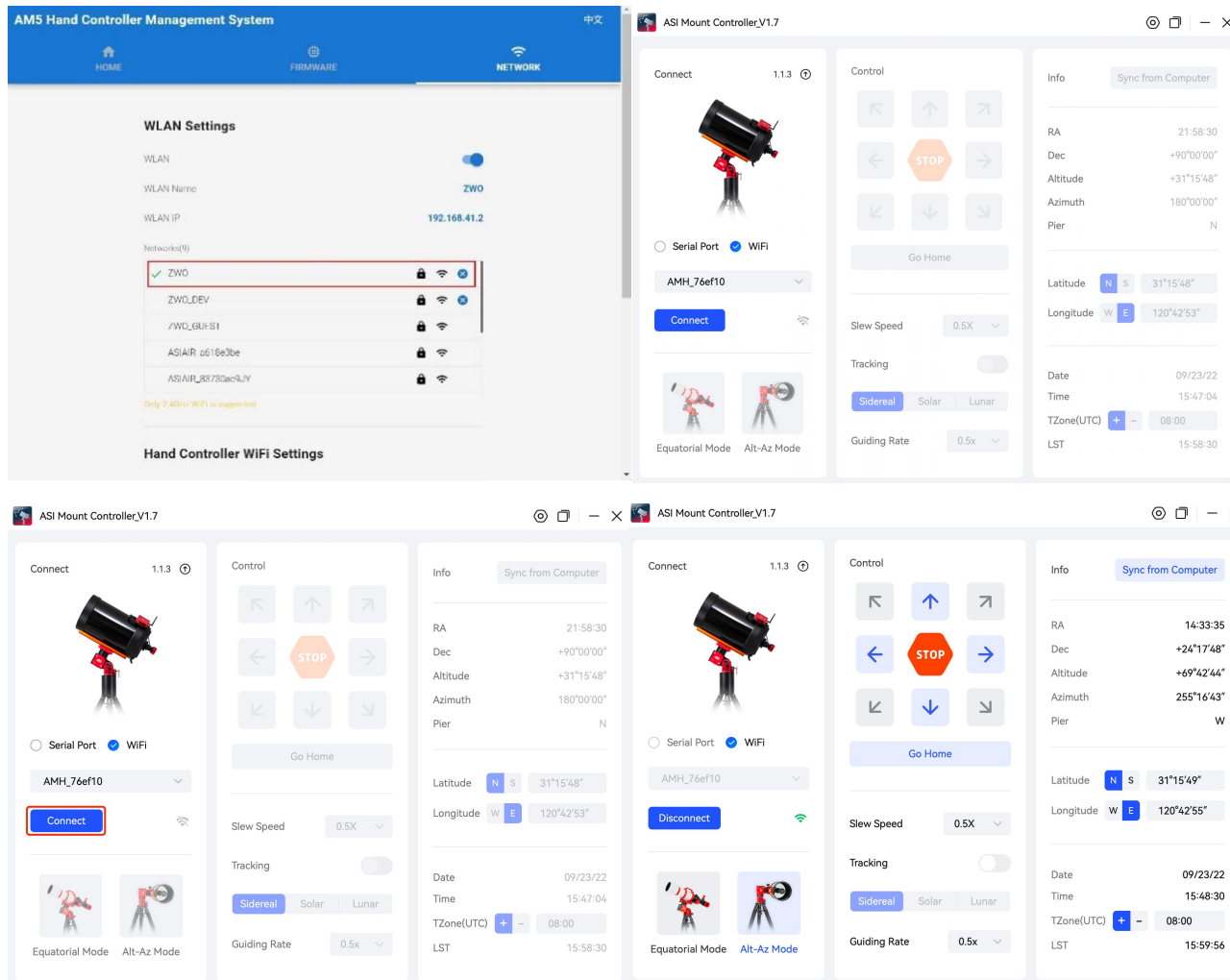
Connect your computer to the WiFi network of the mount hand controller (AMH\_XXXXXX). The default password is 12345678. Open your browser and visit 192.168.4.1 to enter the AM5 Hand Controller Management System.



In the Network settings page, choose the Wireless Local Area Network (WLAN) you'd like to bridge. Enter the password to connect. After the bridge connection is done, re-connect your computer to this WLAN network. Then

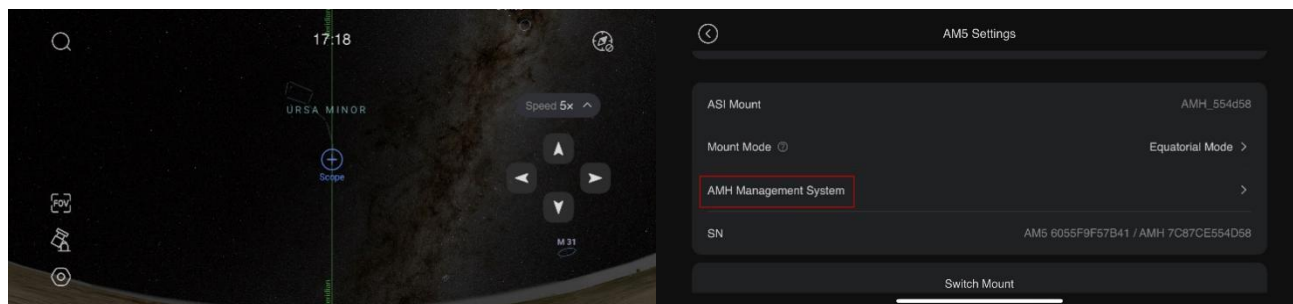
launch the ASI Mount Controller. Choose WiFi connection, find the WiFi name of the mount hand controller in the drop-down box, then click the connection button.

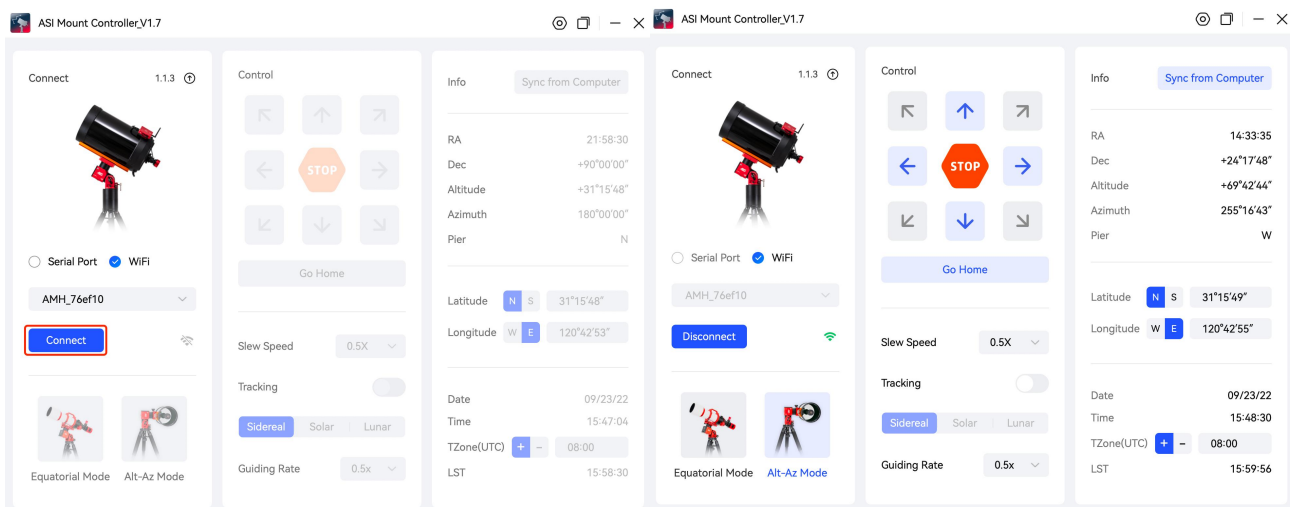
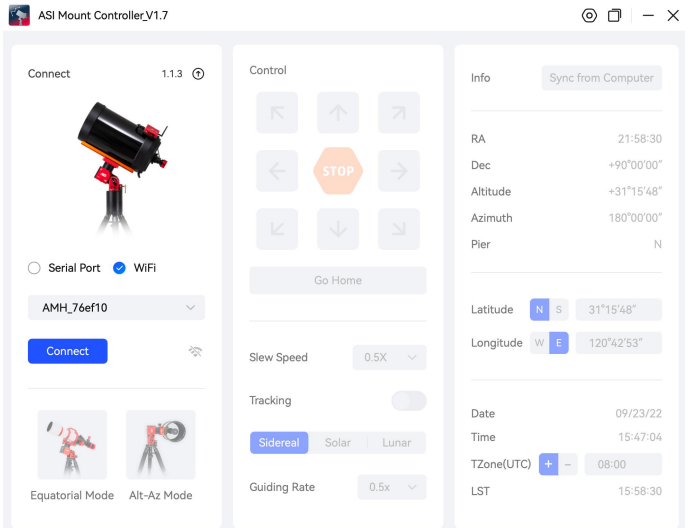
\*Note: If you didn't find the WiFi name of the mount hand controller in the drop-down box, then enter the WLAN IP manually (You can find the WLAN IP in the Network settings page of the AM5 Hand Controller Management System), then click the connection button.



The wireless bridge can also be done in the ASI Mount App. First connect your phone to the WiFi of the AM5 hand controller (AHM\_XXXXXX), then launch ASI Mount App.

Tap the mount icon to enter the AM5 settings page. Tap the AM5 management system, then tap its WiFi setting page. Choose a WLAN network to bridge. After the bridge connection is completed, come back to the ASI Mount Controller in your computer. Find the WiFi name of the hand controller in the drop-down box to connect.



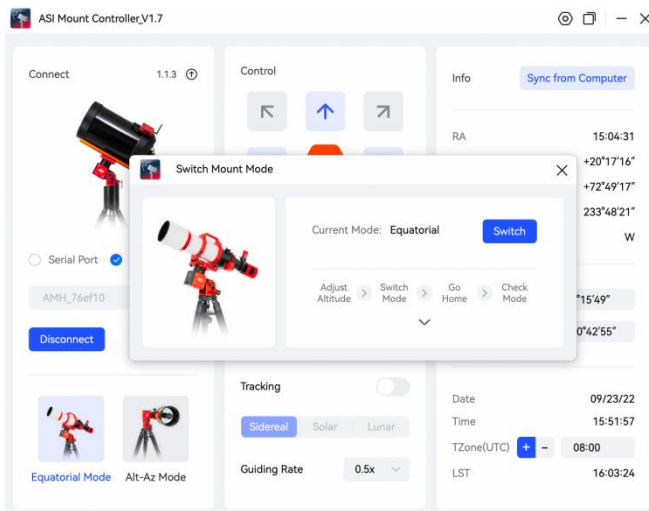


\* After the mount is connected, the controller will automatically read the mount information (RA, DEC, Altitude, Azimuth, Pier), and time information (Date, Time, Time Zone, LST). But you'll need to set the Latitude and

Longitude information manually.

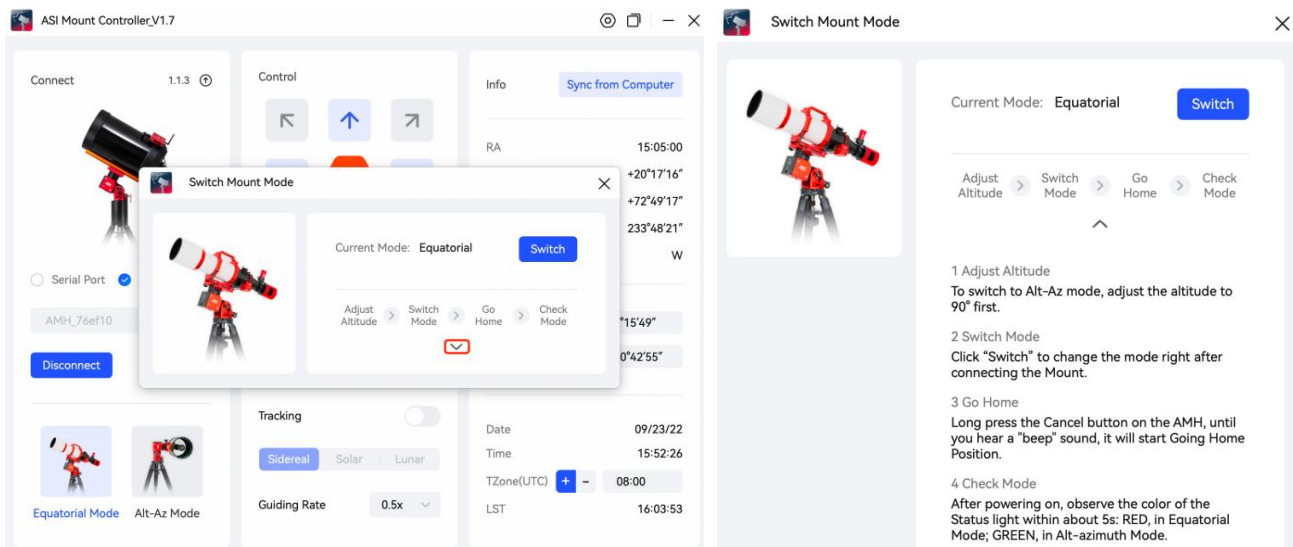
### 3. Equatorial Mode/Altazimuth Mode Switch

Click the picture of the modes to open the Switch Mount Mode window.




Before clicking the Switch button, please check the Current Mode. The switch process is:

Adjust Altitude > Switch Mode > Go Home > Check Mode. You can click the bottom arrow to expand to see the detailed switch process.



### 4. Mount Firmware Update

Click the little arrow button  besides the mount to open the FW Update window. It will automatically detect whether there is a new firmware version to update (Computer needs Internet access). You can choose online upgrade or download the firmware to install manually.

Connect

1.1.2



Serial Port  WiFi

FW Update




Your ASI Mount FW is up to date

ASI Mount v1.1.2

Install Manually

Online Upgrade

## 5. Setting

1. Click the Setting button  in the top right corner to open the Setting window.

ASI Mount Controller\_V1.7



Connect

1.1.3



Serial Port  WiFi

cu.usbmodem1234561

Disconnect



Equatorial Mode



Alt-Az Mode

Control



Go Home

Slew Speed

0.5X

Tracking



Sidereal

Solar

Lunar

Guiding Rate

0.5x

Info

Sync from Computer

RA 22:06:39

Dec +90°00'00"

Altitude +31°15'48"

Azimuth 180°00'00"

Pier N

Latitude N S 31°15'48"

Longitude W E 120°42'53"

Date 09/23/22

Time 15:55:12

TZone(UTC) + - 08:00

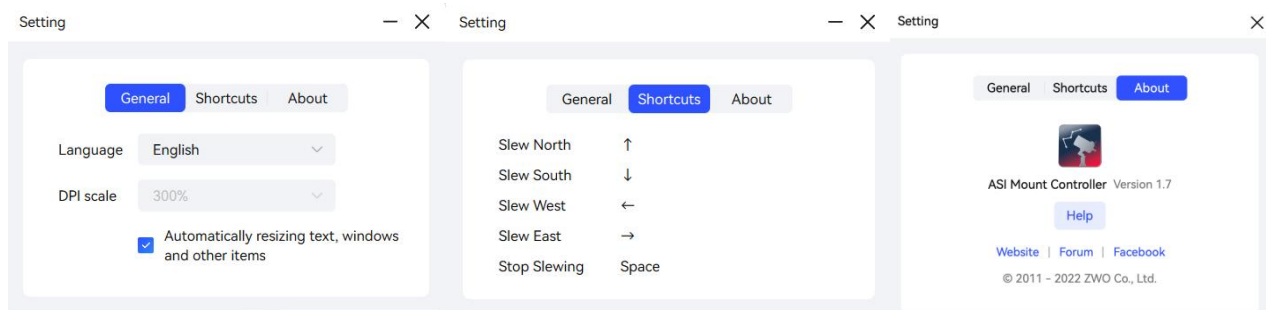
LST 16:06:39


In Setting, there are three parts,

**General:** Choose language, High Resolution settings (supported only on Windows).

Shortcuts descriptions.

**About:** AMC version, Help document and access path of ZWO official website, ZWO forum and ZWO Facebook page.



2. Click the  icon in the top right corner to switch between the Full interface and Mini interface. Click the arrow beneath the direction control section to unfold more settings.

