

# ASIDeepStack Manual

v1.1 2021.03.31

1. Introduction >

2. User Interface >

3. Quick Guide >

4. FAQ >

⚠ Important notes

💡 Operation tips

\*Click the contents page to jump to the corresponding page.



## 1. Introduction

ASIDeepStack is a deep sky stacking software (only support 16 bits FITS files now). It offers a very broad variety of capabilities, including image preview, stack, histogram stretching and much more.

## 2. User Interface

As shown in Figure 2-1 and Figure 2-2, the user interface is divided into 9 parts :



Figure 2-1

# ASIDeepStack Manual

v1.1 2021.03.31

1. Introduction >

2. User Interface >

3. Quick Guide >

4. FAQ >

⚠ Important notes

💡 Operation tips

\*Click the contents page to jump to the corresponding page.



Figure 2-2

- A:** Setting Bar, including theme skin, general settings and help.
- B:** File List Area, including Bias, Flat, Dark, Light four tabs, empty current tab button and so on.
- C:** Stack Area, including open save path, start stacking and switch single/stacked display.
- D:** Histogram Settings Area.
- E:** Full-screen Button.
- F:** Vertical Toolbar.
- G:** Capture Display Area.
- H:** Status Bar. It shows current display image info and loading progress.
- I:** Image Processing Area.

# ASIDeepStack Manual

v1.1 2021.03.31

1. Introduction >

2. User Interface >

3. Quick Guide >

4. FAQ >

⚠ Important notes

💡 Operation tips

\*Click the contents page to jump to the corresponding page.



## 3. Quick Guide

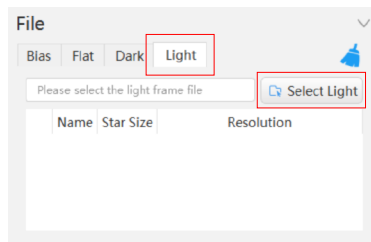


Figure 3-1

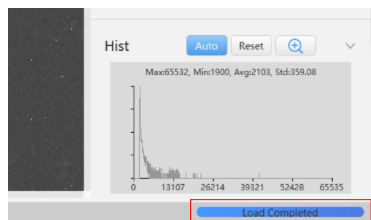


Figure 3-2




Figure 3-3

① Open ASIDeepStack, click the "Light" tab in File List Area (Area B) to switch to the "Light" tab, as shown in Figure 3-1:

② Click the "Select Light" button in File List Area (Area B) and select the Light files that need to be stacked in the pop-up dialog.

③ After selecting and confirmation, it begins to import them. At the same time, notice the progress bar at the lower right corner of Status Bar (Area H). "Load Completed" will be prompted when it finished, as shown in Figure 3-2:

The start stacking button  in Stack Area (Area C) is now available. Click the button to pop up the stack window and start stacking.

④ After stacking successfully, the stacking window will automatically close and the stacked image will be displayed, as shown in Figure 3-3:

# ASIDeepStack Manual

v1.1 2021.03.31

1. Introduction >

2. User Interface >

3. Quick Guide >

4. FAQ >

⚠ Important notes

💡 Operation tips

\*Click the contents page to jump to the corresponding page.

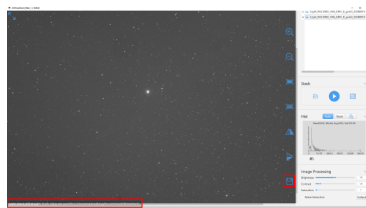


Figure 3-4

Move the mouse pointer to Vertical Toolbar (Area F), click button to save the stacked fit and jpg file. The title of the file and the path it was saved in will be shown at the lower-left corner of Capture Display Area (Area G), as shown in Figure 3-4:

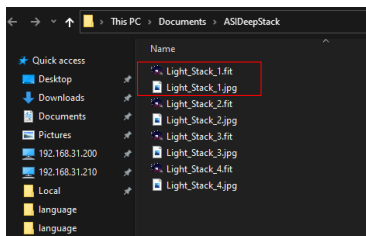



Figure 3-5

⑤ Click  button in Stack Area (Area C) to open the folder where the images are saved as shown in Figure 3-5: You can find the corresponding saved files according to the stack time and file modification date.

💡 If you need to add the calibration files, switch to the corresponding tab to import them separately, and then stack.

1. Introduction >

2. User Interface >

3. Quick Guide >

4. FAQ >

⚠ Important notes

💡 Operation tips

\*Click the contents page to jump to the corresponding page.



## 4. FAQ

**Q1: I go to the save path after done stacking but I cannot find the files.**

A: There will be an error message in the lower-left corner of Capture Display Area (Area G) if the image is not saved successfully, as shown in Figure 4-1:

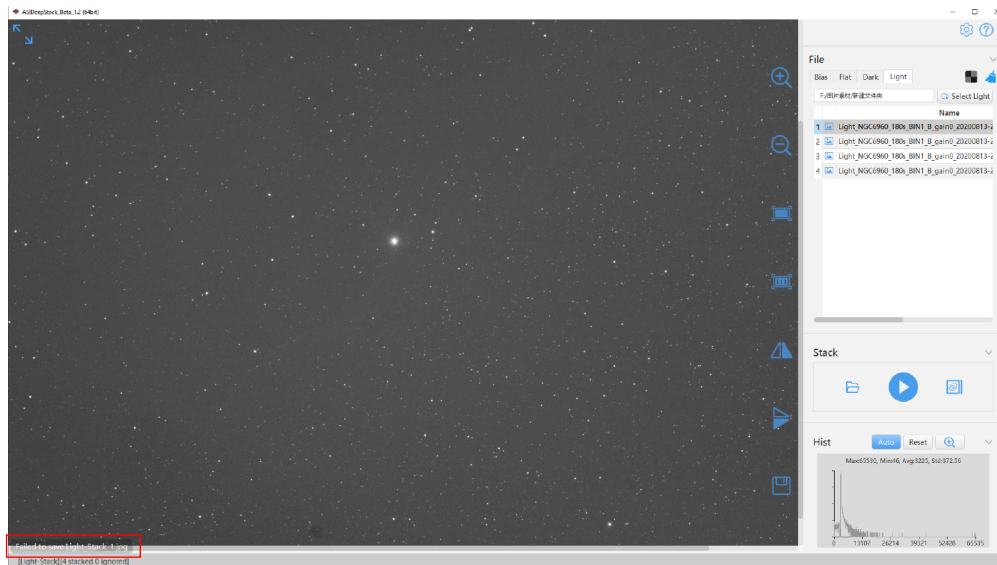


Figure 4-1

You can follow the following guide to solve the problem:

# ASIDeepStack Manual

v1.1 2021.03.31

## 1. Introduction >

---

## 2. User Interface >

---

## 3. Quick Guide >

---

## 4. FAQ >

⚠ Important notes

💡 Operation tips

\*Click the contents page to jump to the corresponding page.



For Windows computers, please check the permission of the folder ( **right click -> Properties ->Security** ) to see whether you are the administrator and whether you have the rights to read and write the files/folders. Normally the folders on C: drive all need the permission of the administrator to write to the files except the user directory. We recommend you select D: drive or E: drive as the save path, or run the ASIDeepStack as administrator at the very beginning.

For Linux & Mac computers, as is the solution with Windows, do not set the save path as that requiring root privileges to write in. Of course, running ASIDeepStack as root will also solve the problem.