

ASISudio Manual

v1.1 2021.03.31

1. Introduction >

2. User Interface >

3. Detailed Introduction >

- ① Install for the first time
- ② Update
- ③ Collect logs (.log) and configuration files (.ini)

⚠ Important notes

💡 Operation tips

*Click the contents page to jump to the corresponding page.



1. Introduction

ASISudio is a one-stop astrophotography software that integrates ASICap (planetary imaging), ASIIImg (deep sky imaging), ASILive (deep sky imaging live stacking), ASIFitsView (fits image viewer), and ASIDeepStack (deep sky stacking).

2. User Interface

As shown in Figure 2-1 , the user interface is divided into 3 parts :

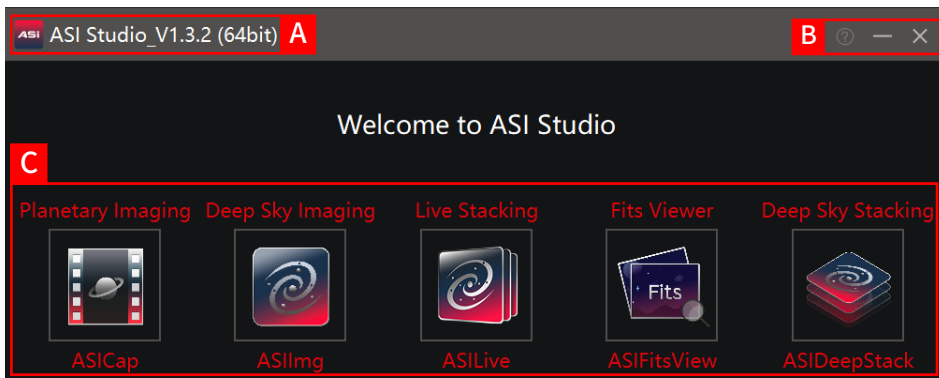


Figure 2-1

A: Title Bar. It shows the software name, version number and bits.

B: Button Area. It gives easy access to check for update and "about us" .

C: Software Area, including all ASI software.

ASiStudio Manual

v1.1 2021.03.31

1. Introduction >

2. User Interface >

3. Detailed Introduction >

- ① Install for the first time
- ② Update
- ③ Collect logs (.log) and configuration files (.ini)

⚠ Important notes

💡 Operation tips

*Click the contents page to jump to the corresponding page.



3. Detailed Introduction

① Install for the first time:

Download the corresponding system version from the official website, ASiStudio currently supports Win7 / Win8 / Win10 (64bits / 32bits), Mac OS 10.12 and above, Ubuntu 16.04 and above.

We recommend you install ASiStudio in non-system directories and SSD solid-state drives.

💡 If ASiStudio cannot be installed in Mac OS (Error: "Could not be authenticated "), please click the link below to solve it:

[How to solve "Can't be verified" issue](#)

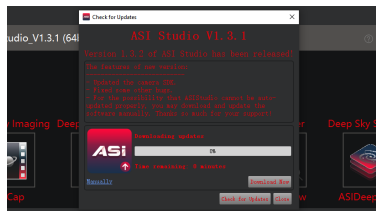


Figure 3-1

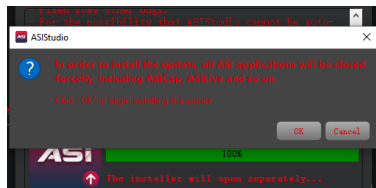


Figure 3-2

② Update:

Every time you open ASiStudio, it will automatically check for updates. If a new version is available, an update confirmation window will pop up, as shown in Figure 3-1:

Click "Download Now" to start downloading the latest version. If the automatic update fails, please click "manually" to download the installation package through the browser or download tool. When the upgrade is complete, a prompt as shown in Figure 3-2 will appear:

ASISudio Manual

v1.1 2021.03.31

1. Introduction >

2. User Interface >

3. Detailed Introduction >

- ① Install for the first time
- ② Update
- ③ Collect logs (.log) and configuration files (.ini)

⚠ Important notes

💡 Operation tips

*Click the contents page to jump to the corresponding page.

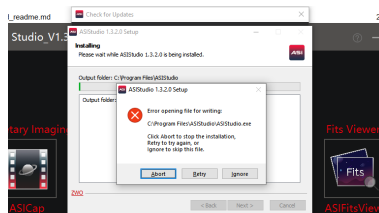


Figure 3-3

Before clicking "OK" to start the upgrade, make sure that all ASI programs (ASISudio, ASiCap, ASiLive, etc.) are closed, otherwise the installation may fail, as shown in Figure 3-3:

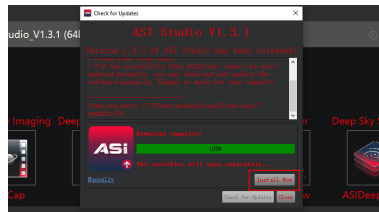



Figure 3-4

In case of this problem, click "Abort", make sure that all ASI programs are closed and then click "Install Now" to retry the installation, as shown in Figure 3-4:

If you encounter a network problem and no new version is detected after opening ASISudio, you can check the update by the following steps:

- 1) Click  button in the title bar (area A)
- 2) Click "Update" in the pop-up menu
- 3) Click "Check for Updates" button in the window.

ASiStudio Manual

v1.1 2021.03.31

1. Introduction >

2. User Interface >

3. Detailed Introduction >

- ① Install for the first time
- ② Update
- ③ Collect logs (.log) and configuration files (.ini)

⚠ Important notes

💡 Operation tips

*Click the contents page to jump to the corresponding page.

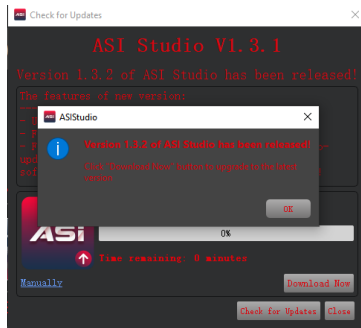


Figure 3-5

If a new version is available, the prompt shown in Figure 3-5 appears:

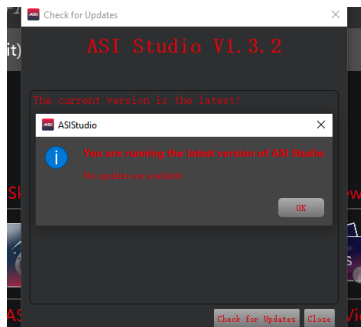


Figure 3-6

If there is no new version to update, a prompt shown in Figure 3-6 appears:

ASISudio Manual

v1.1 2021.03.31

1. Introduction >

2. User Interface >

3. Detailed Introduction >

- ① Install for the first time
- ② Update
- ③ Collect logs (.log) and configuration files (.ini)

⚠ Important notes

💡 Operation tips

*Click the contents page to jump to the corresponding page.

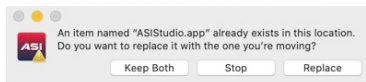


Figure 3-7

⚠ Mac users need to notice:

When updating the installation, select "Replace", as shown in Figure 3-7. Otherwise, ASISudio cannot be opened after installation.

③ Collect logs (.log) and configuration files (.ini):

We spare no efforts to improve ASISudio persistently, it is inevitable that there will be some problems. When some unknown errors occur, it is necessary that you collect the logs and configuration files of the software and upload them to us for analysis and problem solving.

The software is divided into two parts, the first part is ASI Studio, which is a navigation software, the second part is ASICap, ASILmg and so on. Each of them has its own log and configuration file (except ASIFitsView).

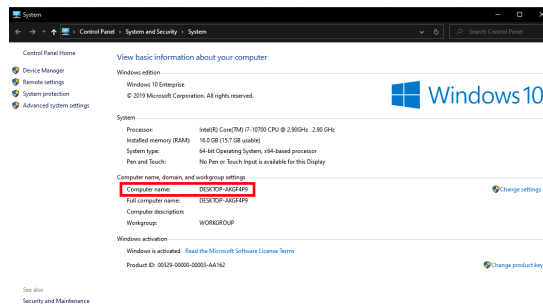


Figure 3-8

Windows:

The root directory of log files is "C:\Users\madongliang\AppData\Roaming\ASICap". This is just an example, "madongliang" is my "computer name", You can find your "computer name" in control panel -> system and security ->system, as shown in Figure 3-8:

ASISudio Manual

v1.1 2021.03.31

1. Introduction >

2. User Interface >

3. Detailed Introduction >

- ① Install for the first time
- ② Update
- ③ Collect logs (.log) and configuration files (.ini)

⚠ Important notes

💡 Operation tips

*Click the contents page to jump to the corresponding page.

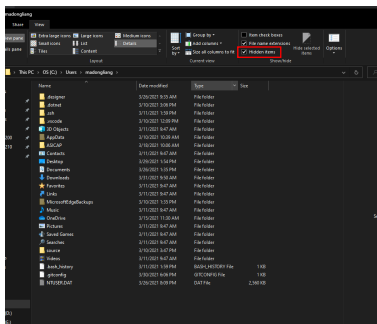


Figure 3-9

If the "AppData" folder cannot be found, please make sure that "Hidden Items" is checked, as shown in Figure 3-9:

In addition, "ASISCap" in the path corresponds to the log of ASISCap. If you want to view the log of ASISImg, change "ASISCap" in the path to "ASISImg".

The root directory of the configuration file is "**C:\Users\madongliang\AppData\Local\ASISCap**", this is also an example, as described above.

Mac :

The root directory of log files is "**~/Library/Application Support/ASISCap**". This is just an example. If you cannot find the "Library" folder, use **Command(⌘) + Shift(⇧) + .** to display hidden files and folders. In addition, "ASISCap" in the path corresponds to the log of ASISCap. If you want to view the log of ASISImg, change "ASISCap" in the path to "ASISImg". The root directory of the configuration file is "**~/Library/Preferences/ASISCap**", this is also an example, as described above.

Linux :

The root directory of log files is "**~/local/share/ASISCap**". This is just an example. If the ".local" folder cannot be found, please use the key combination **Ctrl + H** to show the hidden files and folders. In addition, "ASISCap" in the path corresponds to the log of ASISCap. If you want to view the log of ASISImg, change "ASISCap" in the path to "ASISImg". The root directory of the configuration file is "**~/config/share/ASISCap**", this is also an example, as described above. If the ".config" folder cannot be found, please use the key combination **Ctrl + H** to show the hidden files and folders.